



***UF II Anatomic
Abutment***

DIO IMPLANT

UFII Anatomic Abutment

MORE developed than Stock Abutments,
MORE convenient than Customized Abutments!



CEJ Cemento-enamel junction

The Anatomic Abutment was created based on the CEJ and thus has an excellent aesthetic appearance.



What makes UFII Anatomic Abutment so special?

	Stock Abutment	Customized Abutment	Anatomic Abutment
Making Process	Shorter	Longer	Shorter
Time saving	Increase the chair time	Increase the chair time	Decrease the chair time
Using library	Yes	No	Yes
Customized for the Patient's gingiva		Customize	Customize
Post area	Small	Wide	Wide
Getting omitted prosthesis	High chance	Low chance	Low chance
Cost	Low cost	High cost	Low cost



Easy to use like Stock Abutment,
customized for the individual like
Customized Abutment

All in One!
UFII Anatomic Abutment



Clinical benefits of UF II Anatomic Abutment

Fabricating a prosthesis using Anatomic Abutment

The ideal Anatomic Abutment will be determined during the digital design process, and sent to the doctor with the surgical guide.



Multi-purpose of Anatomic Abutment



Function Scan Adapter

Proprietary Protect Cap for Anatomic Abutment enables gingiva healing and accurate intraoral scanning.



UFII Anatomic Abutment **lower cost**
and **decrease the chair time**

Optimized design

An abutment optimized for immediate loading during flapless surgery.

Convenience

The convenience of not needing to detach the abutment when mounting the final prosthetic after implant surgery

High accuracy.

Make high accuracy prosthesis designed by intraoral scan and library

Scan Adapter Function

Marking

- L25** · L Lower Incisor 2 Cuff Height 5 Post Height
- U25** · U Upper Incisor 2 Cuff Height 5 Post Height
- C25** · C Canine 2 Cuff Height 5 Post Height
- P25** · P Pre-Molar 2 Cuff Height 5 Post Height
- M25** · M Molar 2 Cuff Height 5 Post Height

Attention

0.5 unit marking exempted in accordance with marketing
 ex) Cuff 2.5 = 2 / Post 5.5 = 5



Protect Cap
Lock-Groove

Shoulder Margin

UF II Connection



UF II
Connection



UFII Narrow
Connection



Non-Hex



Lower Incisor



Upper Incisor



Canine



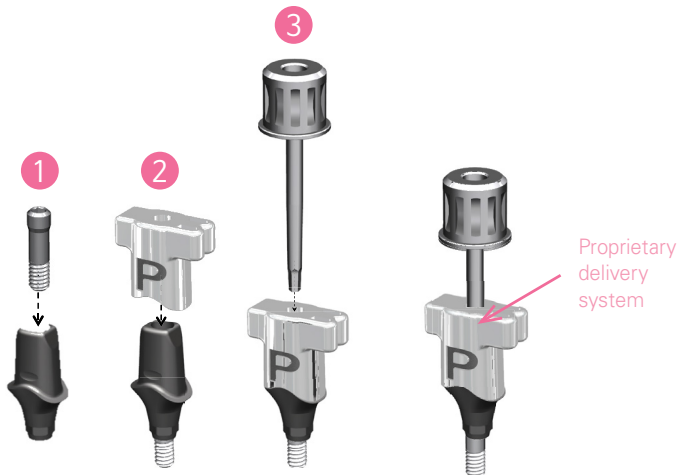
Pre-Molar



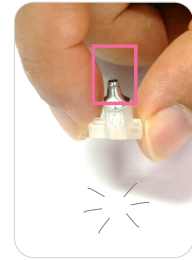
Molar

Cross Section					
Cervical Margin Cross Section					
Facial Side					
Connection	UF(II) Narrow	UF(II) Narrow / UF(II)	UF(II)	UF(II)	UF(II)
Cervical Margin Dimension (Mesiodistal x faciolingual)	5 X 5.2	6.1 X 5.7	5.3 X 6.3	5.8 X 6.8	7.3 X 7.8
Ratio (%)	70%	70% / 85%	85%	85%	85%

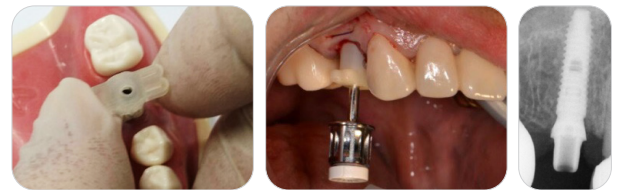
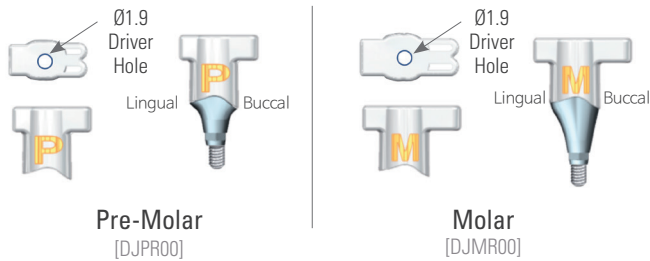
Connecting Hex is easy and simple



Easier delivery to the intra oral area (Only require the driver)



Carrier prevents screw from dropping into the patients throat to mouth



Easier handling and a more precise connection

Anatomic Abutment Line-Up

			Narrow		Narrow														
No.	Cuff	Post	Lower Incisor	Upper Incisor	Upper Incisor	No.	Cuff	Post	Canine	No.	Cuff	Post	Pre-Molar	Molar					
1	1.5	4.0				2	2.5	5.5		1	1.5	4.0							
2	2.5					3	3.5	2		2.5	5.5				2	2.5			
3	3.5					5.5				7	2.5		7.0		3	3.5	5.5		
4	4.5									8	4.5		8		4.5	5			
5	5.5	5.5				8	3.5	7.0		6	2.5	7.0							
6	1.5									7	2.5				7	7	3.5	7	3.5
7	2.5	5.5				8	3.5	7.0		5	1.5	7.0							
8	3.5									6	2.5				6	2.5	7	3.5	8
9	4.5	5.5				8	3.5	7.0		6	2.5	7.0							
10	5.5									7	3.5				7	3.5	8	4.5	



DIO USA

3470 Wilshire blvd.,#620,

Los Angeles

CA 90010 USA

T 213-365-2875

E usahq@dioimplantusa.com